

USS Lloyd Thomas  
WestpacCruise'72









USS Lloyd Thomas  
Westpac Cruise '72





# Lloyd Thomas: The Man

Lloyd Thomas was born on March 10, 1912 in Nelsonville, Ohio. He graduated from Ohio University in June of 1935, became an aviation cadet on October 4, 1938, and received a commission as an Ensign in the United States Navy on October 26, 1939. He joined Torpedo Squadron Six on board the USS ENTERPRISE on December 13, 1939, and was promoted to Lieutenant (junior grade) one year later. He gave his life in his squadron's attack during the Battle of Midway, and was posthumously awarded the Navy Cross with the following citation:

"For extraordinary heroism and courageous devotion to duty while piloting an airplane of Torpedo Squadron Six in action against enemy Japanese forces in the Battle of Midway on June 4, 1942. Participating in a vigorous and intensive assault against the Japanese invasion fleet, Lieutenant (junior grade) Thomas pressed home his attack with relentless determination in the face of a terrific barrage of anti-aircraft fire. The unprecedented conditions under which his squadron launched its offensive were so exceptional that it is highly improbable the occasion may ever recur where other pilots of the service will be called upon to demonstrate an equal degree of gallantry and fortitude. His extreme disregard of personal safety contributed materially to the success of our forces, and his conduct was in keeping with the highest traditions of the United States Naval service."

Lloyd Thomas was entitled to the ribbon and facsimile of the Presidential Unit Citation awarded the USS ENTERPRISE for distinguished achievements from December 7, 1941 to November 14, 1942. He was also entitled to the Purple Heart Medal, the American Defense Service Medal (Fleet Clasp), Asiatic-Pacific Campaign Medal, and the World War II Victory Medal.





USS Lloyd Thomas prior to Fram II in 1961



USS Lloyd Thomas off Hawaii in 1970

# The Ship

Construction of the United States Ship honoring Lloyd Thomas was authorized on July 9, 1942. The keel was laid in San Francisco, California, by the Bethlehem Steel Company on March 26, 1944. The USS LLOYD THOMAS was launched on October 5, 1945, and commissioned as a general purpose destroyer March 21, 1947.

LLOYD THOMAS is 390 feet long and 41 feet wide, with a maximum draft of 21 feet, design displacement of 3477 tons. Four boilers deliver steam to two geared turbines that furnish 60,000 horsepower to twin screws capable of maneuvering the ship at over 30 knots. She is manned on this cruise by 15 officers and 270 enlisted men. The primary weapons are anti-submarine, and two twin 5-inch, 38-caliber gun mounts are carried for shore bombardment and defense against air, land and surface attackers.

In 1948 LLOYD THOMAS joined a round the world goodwill cruise starting in San Diego, California, transiting both the Suez and Panama Canals, and covering 45,168 miles. Following conversion to an escort destroyer in 1949 in San Francisco, LLOYD THOMAS was transferred to Newport, Rhode Island. In the years between 1949 and 1961 LLOYD THOMAS made one South American cruise, two European cruises, and six Mediterranean deployments, one of which included numerous port calls east of the Suez Canal. From October 1958 through March 1961 LLOYD THOMAS was an element of Task Group Bravo, an anti-submarine hunter-killer group.

LLOYD THOMAS received a fleet rehabilitation and modernization overhaul (FRAM-II) at the New York Naval Shipyard in 1961. This was followed by one European cruise and four deployments to the Mediterranean, three of which included extensive operation with Middle East forces. During these years LLOYD THOMAS served as host ship for an American Cup race in Newport, saved a fishing trawler flooding off Boston, tracked a probable Soviet submarine for eight hours in the Mediterranean, and won both the Squadron Battle Efficiency Award and Departmental Excellence Awards twice within three years. Late in 1968 the ship lost a large percentage of its crew and entered a reduced operational status. LLOYD THOMAS returned to full operational status in 1969 and in April 1970 changed home port to Pearl Harbor, Hawaii. In August 1970 LLOYD THOMAS departed Pearl Harbor for her first WESTPAC deployment. After returning in February 1971 she conducted various type training exercises, visited the Seattle Sea Fair and participated in the Atomic Energy Commission's Project Cannikin. Upon her return from the Amchitka test LLOYD THOMAS began preparations for her second WESTPAC deployment chronicled in this cruisebook.





## The Captain

Commander JARDINE, a native of New Jersey, was commissioned in June of 1955 following graduation from the U.S. Naval Academy. His first sea assignment was in USS HUGH PURVIS (DD709), where he served in engineering and weapons billets from 1955 until 1958. He then served as Operations Officer for COMDESDIV 181 until the disestablishment of that Staff, at which time he assumed command of USS FRIGATE BIRD (MSC191) in 1958.

Other sea assignments included USS RALEIGH (LPD-1) from 1962 until 1964 as Engineer Officer, and USS WITEK (DD-848) as Executive Officer from 1967 to 1968. From WITEK, Commander JARDINE reported to duty as Commander Mine Division SEVENTY-ONE in Pearl Harbor, where he served as Division Commander until 1970.

Commander JARDINE's shore assignments primarily have been related to education. He attended the U.S. Navy Postgraduate School, Monterey, California from 1960 until 1962, graduating in the Nuclear Engineering (EFFECTS) Course, and was awarded a Master of Science Degree in Physics (Nuclear). From 1964 until 1966, he instructed in the Weapons Department at the Naval Academy and subsequently attended the Naval War College, School of Naval Command and Staff, from 1966 until 1967. He served as Force Inspector for Commander Naval Forces, Vietnam and Chief, Naval Advisory Group, MACV, from June 1970 to June 1971.

Commander JARDINE is married to the former Mary KUCHER of Manchester, New Hampshire. The JARDINES have three children, Douglas, age 12, Nancy, age 11, and Edward, age 5.

# This Is The Captain Speaking...

This book pictorially describes life onboard LLOYD THOMAS much better than the thousands of words it would take to fill these pages. Life onboard will be best remembered by people and events, and here you are, the men of LLOYD THOMAS. This Western Pacific cruise tried our very fiber, as we were first tested by unique operations and finally by the ardors of actual combat. Every event during this cruise required the proper actions of many men working in concert in order to be successful. Moorings, anchorings, underway replenishments, carrier escort, trawler surveillance, naval gunfire support and gunfire strikes within the coastal waters of North Vietnam are the major events and evolutions we will all long remember. The minor ones of cookouts on the flight deck, liberty in foreign ports, and just plain old comradeship onboard underway are equally important in understanding what makes a group of men living and working together become a crew of a U.S. Navy ship.

That we indeed were successful as a crew in doing our job has probably best been said by our "boss," Commander United States SEVENTH Fleet, upon completion of our deployment. I am quoting the following words with pride from his farewell message:

"SAYONARA

As LLOYD THOMAS completes her last and finest deployment ever before decommissioning at Pearl, the log of her final WESTPAC tour can be reviewed with pride. Your cruise extended despite a shortage of personnel and upkeep, you nevertheless saw action early in Freedom Train operations off the North Vietnamese coast and performed with distinction. Equally as well accomplished in gunline operations, trawler surveillance and attack carrier escort, your indomitable fighting spirit was best symbolized by the **Stars and Stripes** photograph showing your ship speeding through a hail of enemy gunfire. To a proud, venerable lady and her outstanding team of officers and men, SEVENTH Fleet says farewell and well done."

The pride I feel is for each and every man assigned to LLOYD THOMAS, and to you I can truly say how happy I am to have been privileged to serve with you as your Commanding Officer. I know that I have been blessed in having such a fine crew. Now with the imminent decommissioning of LLOYD THOMAS upon us, I am saddened to watch you all leave, virtually being scattered to the Four Winds and the Seven Seas. May God's blessings be with you and a warm Aloha always in your heart as you depart. Remember LLOYD THOMAS — it was more than a ship — it was you.





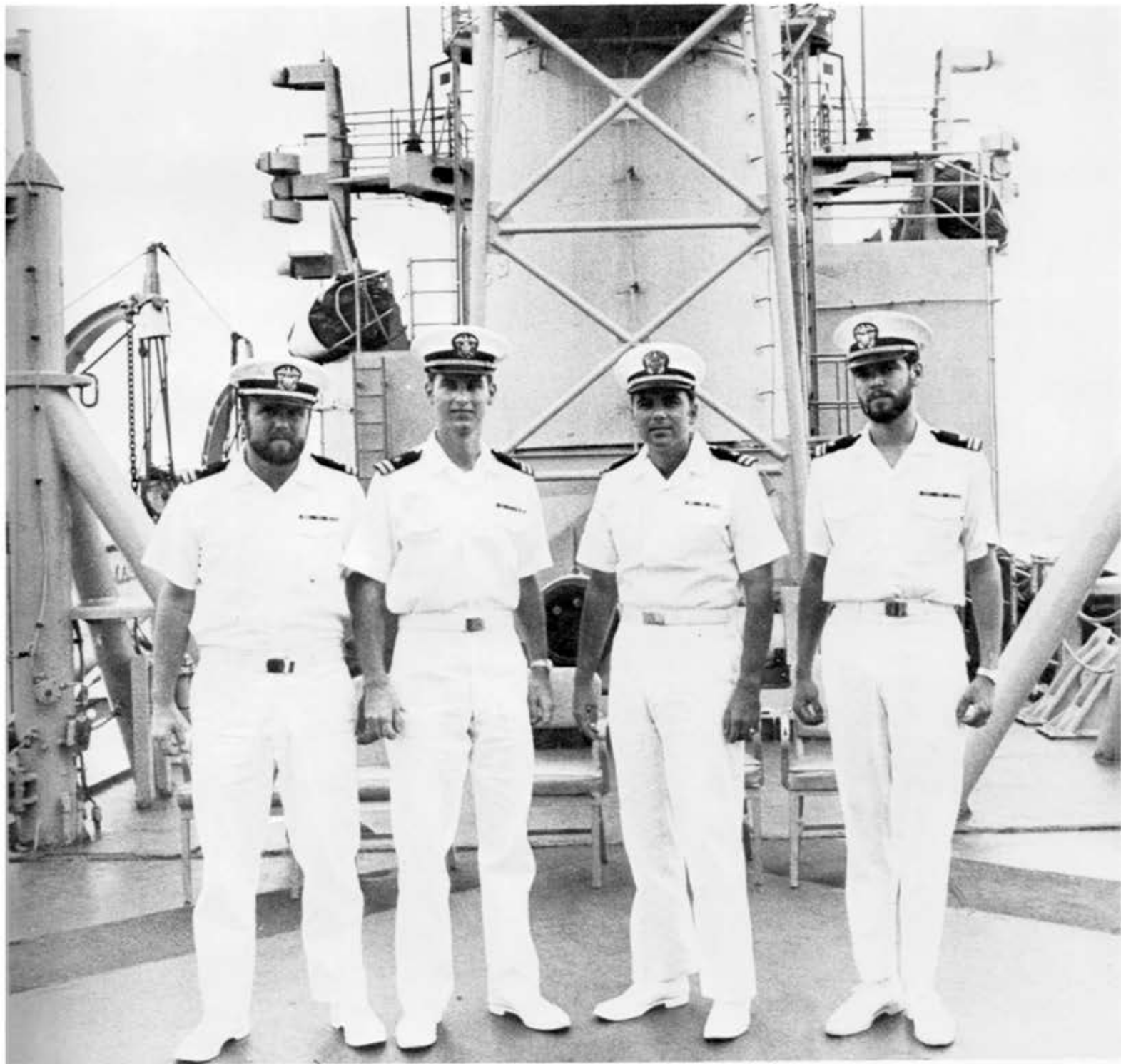
# Executive Officer

Lieutenant Commander Michael D. BICKEL graduated from the U.S. Naval Academy, Annapolis, Md., in June, 1961, and reported to his first duty station, USS TAYLOR (DD-468). Between June, 1961 and April, 1964, he served as Main Propulsion Assistant, Damage Control Assistant, Anti-Submarine Warfare Officer, Gunnery Division Officer, and finally as Weapons Officer.

LCDR BICKEL served next as Executive Officer, USS PLUCK (MSO-464), until May, 1966. Later in May, he was assigned to the Bureau of Naval Personnel (PERS-B2) in Washington, D.C. Following his assignment in BUPERS, in July, 1968, LCDR BICKEL relieved as Commanding Officer, USS HICKMAN COUNTY (LST-825). After twelve months in Vietnam on the HICKMAN COUNTY, he returned to Washington, D.C. to serve as Special Assistant for Naval Personnel, Office of the Assistant Secretary of the Navy (Manpower and Reserve Affairs), from August, 1969, to September, 1971. This was his last duty before reporting aboard LLOYD THOMAS.

LCDR BICKEL is originally from Fort Worth, Texas, and is married to the former Monika Schulte of Hamburg, Germany, and Sydney, Australia. They have two children: David — 8, and Tracy — 5.

# Department Heads



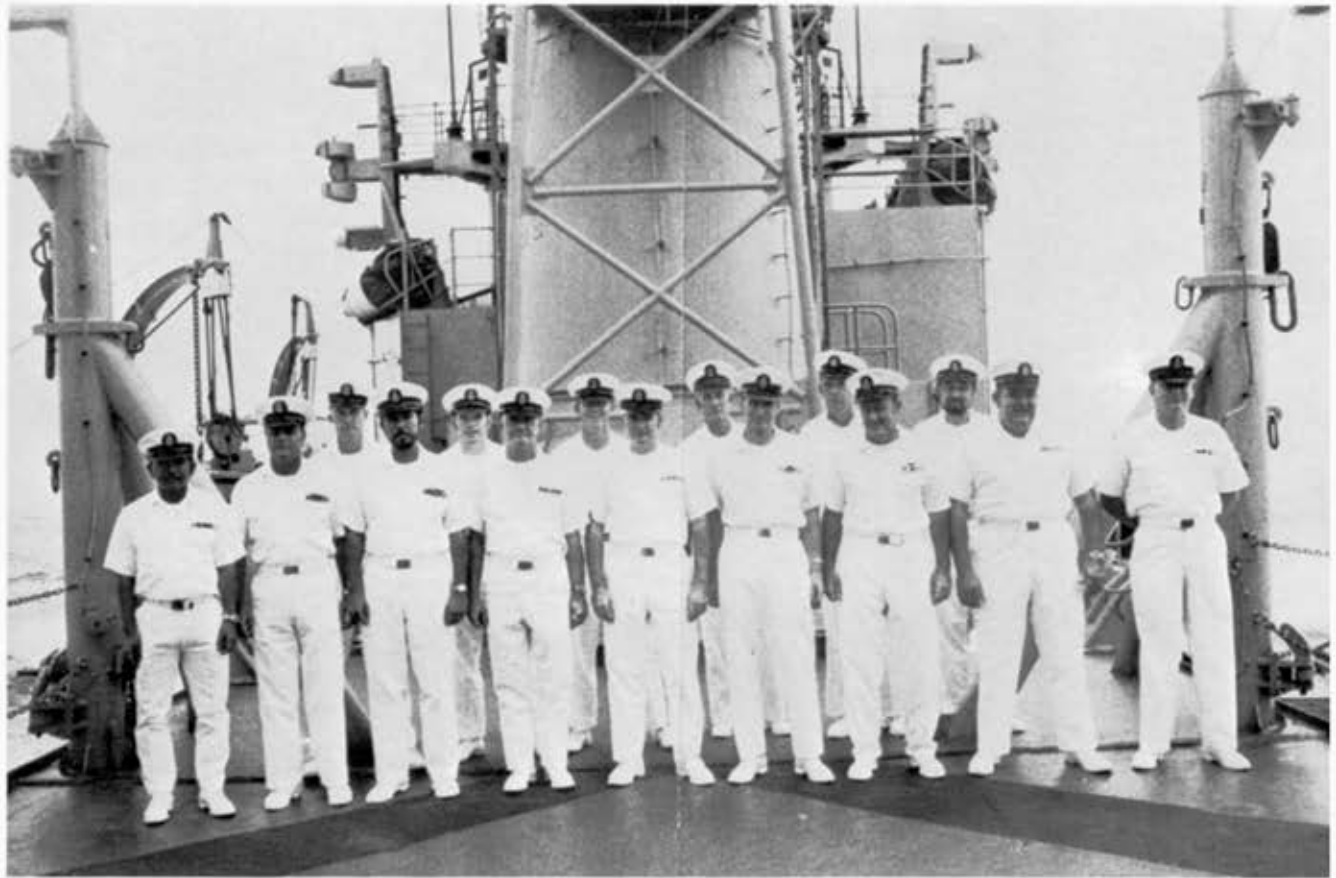
(Left to Right) - LT. Frederick T. WARBURTON (Weapons Officer), LT David M. LEE (Engineering Officer), LT James R. CLARK (Operations Officer), LTJG Scott ROBINSON (Supply Officer)

# Officers



First Row (left to right) - LT F. T. Warburton, LT J. T. Clark, CDR E. F. Jardine, Jr. (Captain), LCDR M. D. Bickel (Executive Officer), LT D. M. Lee, LTJG S. Robinson; Second Row (left to right) - LTJG W. T. Mihalic, ENS R. W. Myers, LTJG W. F. Webb, LTJG B. H. Winston, LTJG G. R. Steiner, LTJG R. W. Pallal, LTJG E. D. Murphy, ENS C. T. Beatty

# Chiefs



First Row (left to right) - SKC E. C. ASCANO, BMC W. L. DIXON, QMC A. V. CANTU, HMC R. F. BEACH, STC R. E. DECLUTE, ETC H. C. BROWNING, EMC J. F. SWEENEY, MMC C. L. FREE, BTCS L. J. GORBY; Second Row - GMGC C. I. BURCHFIELD, YNC R. T. MORAN, MMC A. H. EDWARDS, HTC W. COLE, BTC H. L. RAYBOURN, RMC E. L. CONAWAY

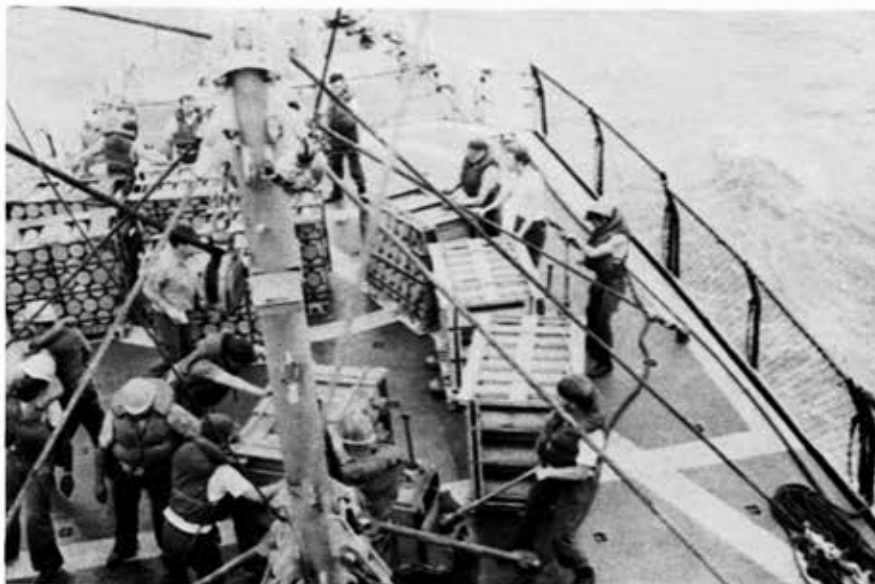




# Deck Division



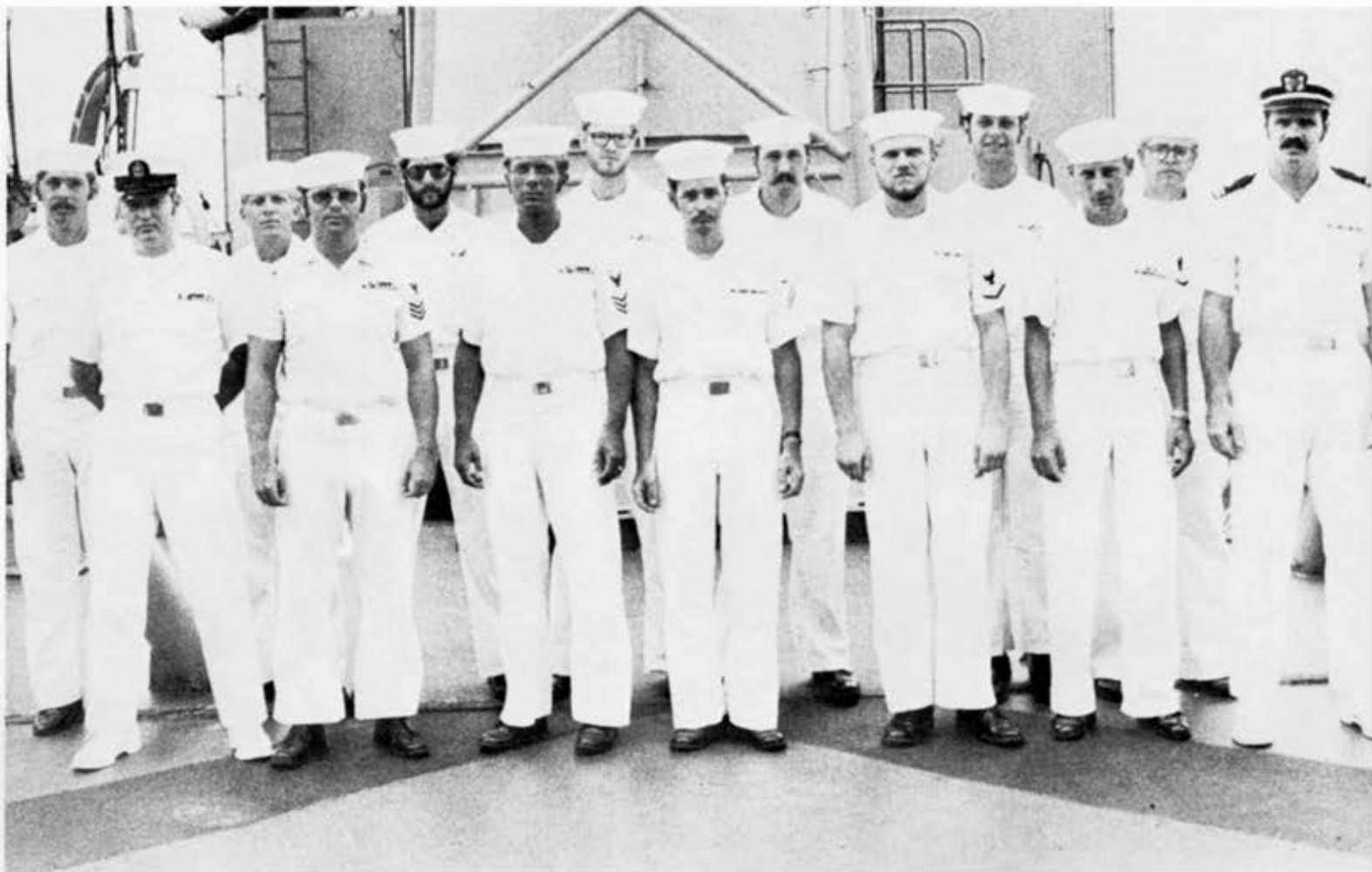
First Row (left to right) - SN E. TAULA, SN D. ANDERSON, SN D. OWENS, SA R. HILL, SA J. HALL, SA L. SLOAN; Second Row - BMC W. DIXON, SN R. CAFARELLI, SA J. JACKSON, SN W. BEDELL, BM1 GREGORY, ENS C. BEATTY; Third Row - SN M. WHITE, SA G. HEIDEMANN, BM2 D. WRIGHT, SN F. MALLEY





First Row (left to right): SN R. CRISOSTOMO, SN C. HENDERSON, SN D. MINGLANA, SA R. RIOS, SN R. CLARK; Second Row - SN J. GUNTER, SN S. QUANDELACY, SN D. MILLER, SA G. HAVILAND, SN D. BRADFORD; Third Row - SN D. JONES, SN S. MCCULLAH, SN P. SEHER, SN F. CLARK, SA G. STEMPEL, BM2 R. SEGER

# AS Division



First Row (left to right) - STC R. DECLUTE, ST1 G. HOLZINGER, ST1 D. DUDLEY, TMSA J. FELTZ, STG3 D. HOFFMAN, STG3 M. COLLINSON, LTJG E. MURPHY: Second Row - STG2 V. GREIFENSTEIN, STG2 S. ANDERSON, STG3 B. CURRAN, STG2 J. HOCHSTETTLER, STGSN R. LINCOLN, TMT3 P. HUIZI, TMT2 M. LAFEVE



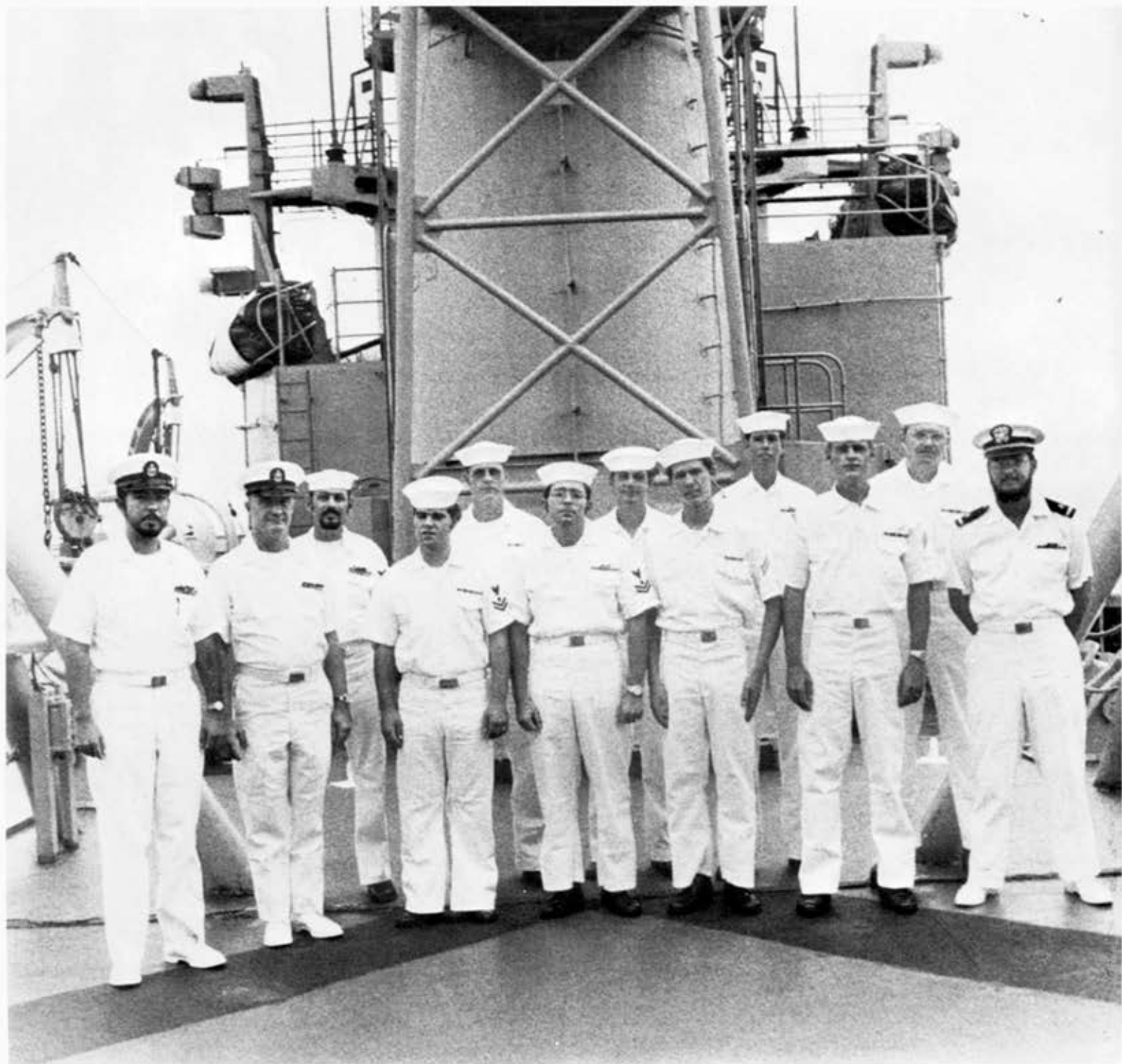
# Gunnery Division



First Row (left to right) - GMG3 M. MILONI, FTG3 T. MONACHELLO, FTG2 M. HOEVEL, FTG2 H. NEWBERRY, GMG3 K. CUMMINS, FTGSN G. BECKWITH; Second Row - FTG3 D. MCPHERSON, GMGC C. BURCHFIELD, FTG3 M. NEWKIRK, GMG1 L. THORNE, FTG3 W. BAILEY, FTG2 D. DOLAMORE, GMG3 T. PETTITT, GMG3 G. ANTONIO, GMG3 V. HOLLOWAY, SN T. OLNEY, FTG1 D. MINER, GMG3 J. ELLISON, LTJG B. WINSTON

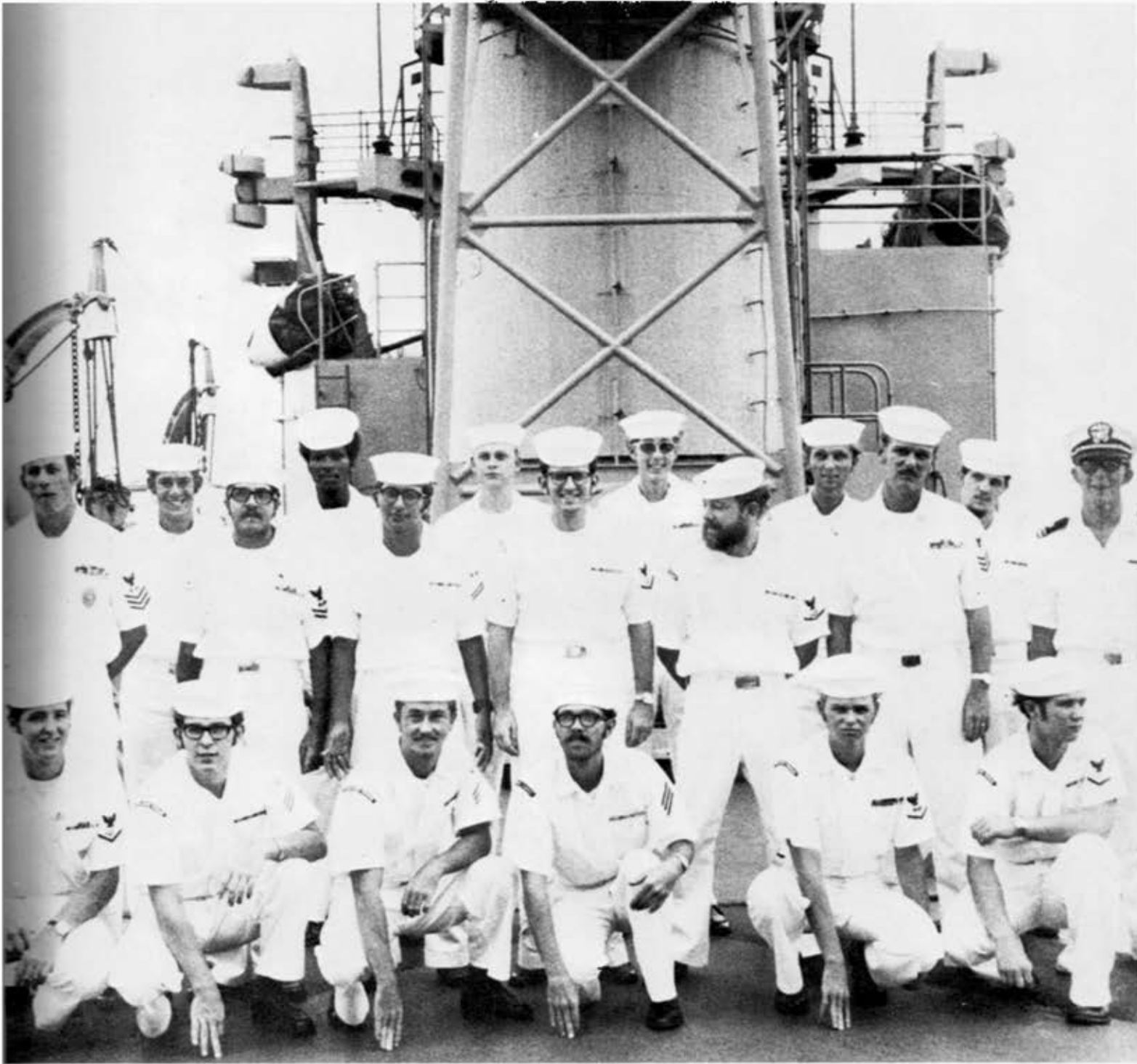


# OX Division



First Row (left to right) - QMC A. CANTU, HMC R. BEACH, QM2 D. FANNON, QM2 C. BROVAN, SN C. DEAM, YN3 C. OSGOOD, ENS R. MYERS; Second Row - PN1 P. GLUCKMAN, SN R. BARR, SA P. EURICH, YN3 T. ROLLINS, YN3 M. LINDSTROM

# OC Division



First Row (left to right) - RM3 M. CARLIN, RMSN G. DAVENPORT, RMSN M. BARTSCH, PCSN D. SANDERS, SM3 W. COLFORD, RM3 R. PIERCE; Second Row - SM1 M. SMITH, SM2 A. RUBAY, SMSN C. HENRY, RM3 D. LAWTON, RM3 J. RADWAY, RM1 W. VIEHMANN, LTJG G. STEINER; Third Row - SMSN F. LEVINSON, SMSN L. GARY, SMSA J. KINNUNEN, RM3 J. ALMON, RM2 M. JACKSON, RMSN R. FRASER

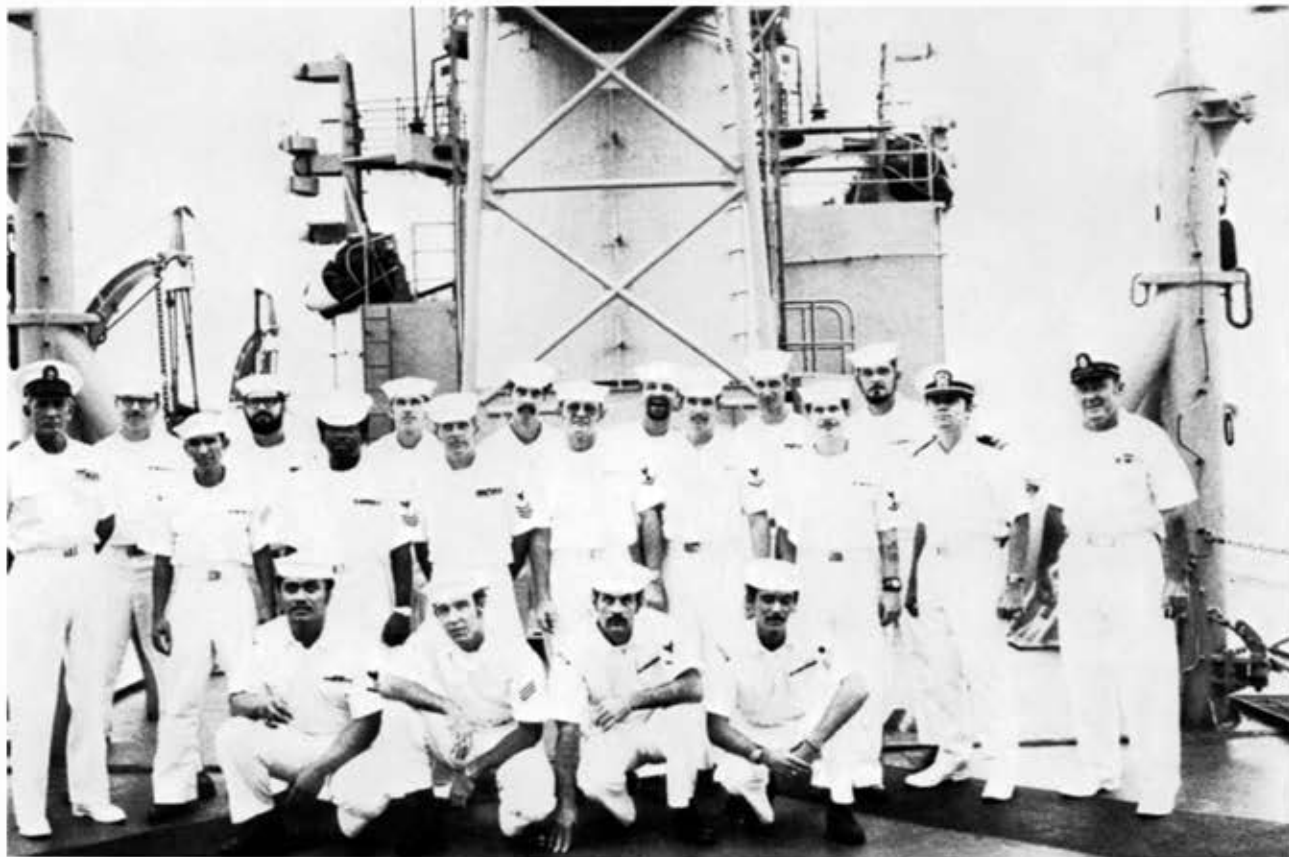
# 01 Division



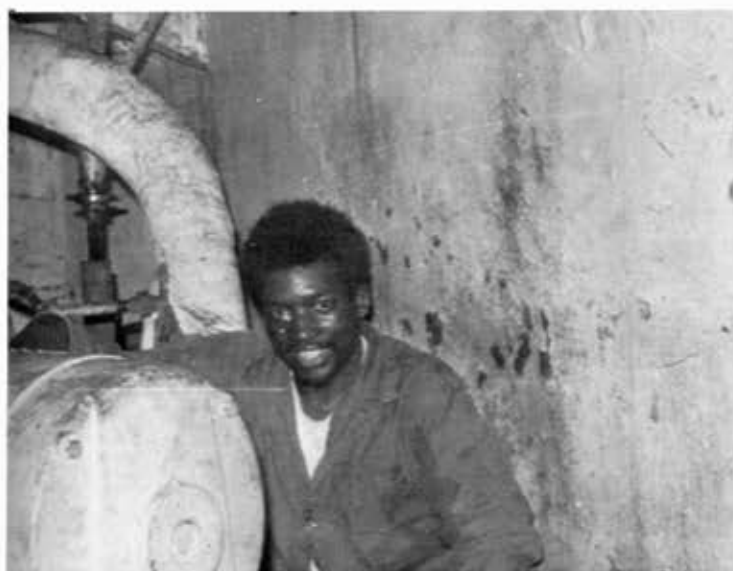
First Row (left to right) - RD3 M. POPE, RD1 J. MCGINNIS, ET1 R. MADANSKY, ETR2 S. CARROLL, ETR2 P. BADUA, RDSN T. BOATSMAN, ET1 K. SCOTT, LTJG W. WEBB; Second Row - ETC H. BROWNING, ETR2 R. FEAGLES, RD3 G. HARDY, RD3 L. BRADEN, RDSN M. FISH, RD3 G. DREWS, EW3 A. ANTON, RDSA H. KENNEDY, RDSN P. HOEPHNER, ETR2 K. JACKSON; Third Row - RD3 K. SHEFFER, RDSN J. CROSS, RD2 C. STOYSICH, ETN3 J. WILLIAR, ETN2 P. SWIDER, RDSN D. WASHBURN, RD2 T. DOYLE, ETRSN J. HUTCHINSON, ETNSN J. STOWASER



# R Division

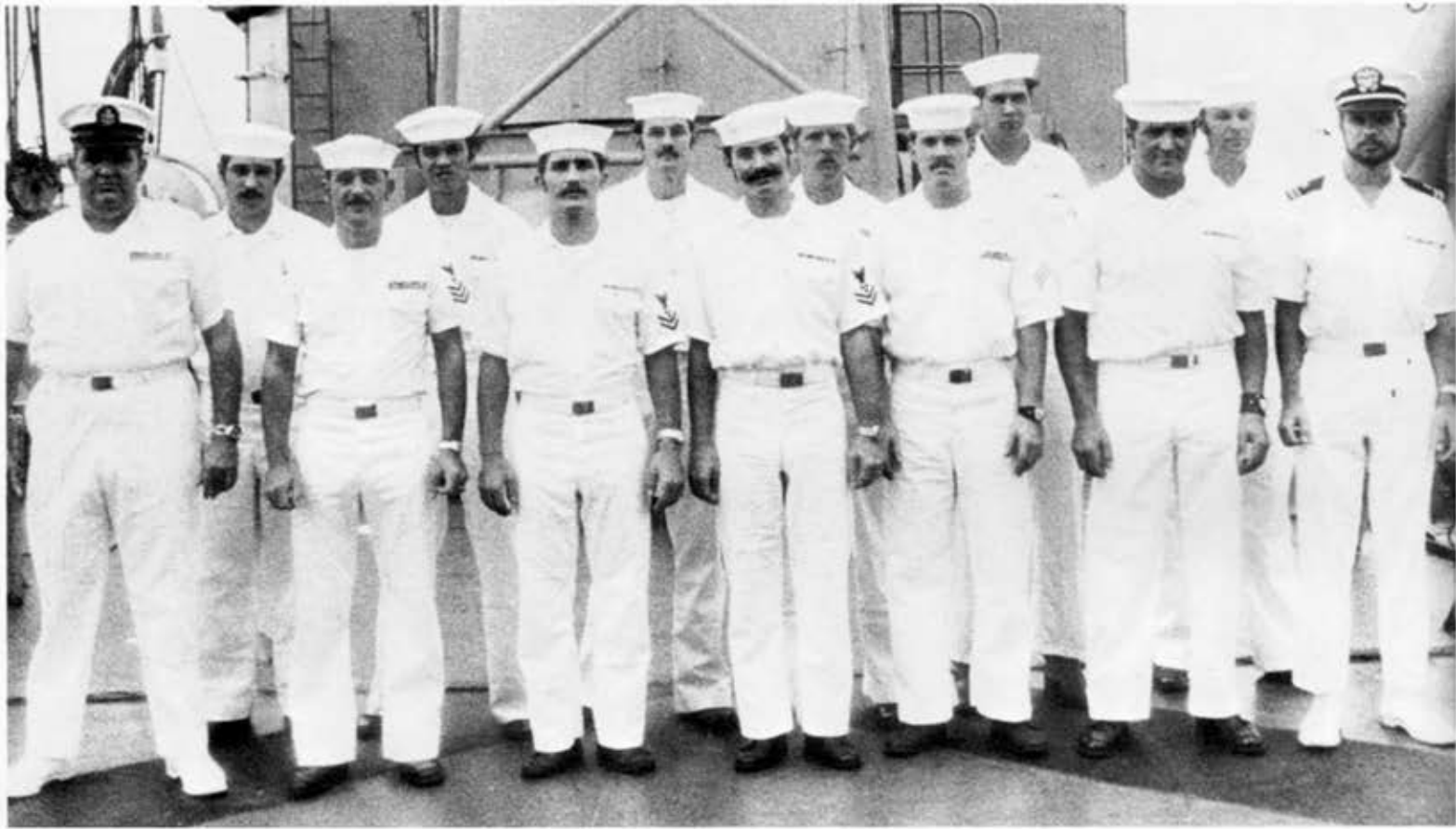


First Row (left to right) - EN3 E. PUAOI, ENFN L. HANKINS, HT3 C. GREER, FN N. ANDERSON: Second Row (left to right) - HTC W. COLE, EMFN E. LARA, EN1 J. DE-LEON, HT1 D. FRENCH, EM3 E. RAGSDALE, EN3 T. WALTERS, EM2 P. BLACK, LTJG R. PALLA, EMC J. SWEENEY: Third Row (left to right) - HTFN L. REILLY, ICI F. MILKE, HT3 K. JARBOE, HTFN W. ATWOOD, FN R. VIEU, MM2 J. CREMEEN, EM1 G. HANN



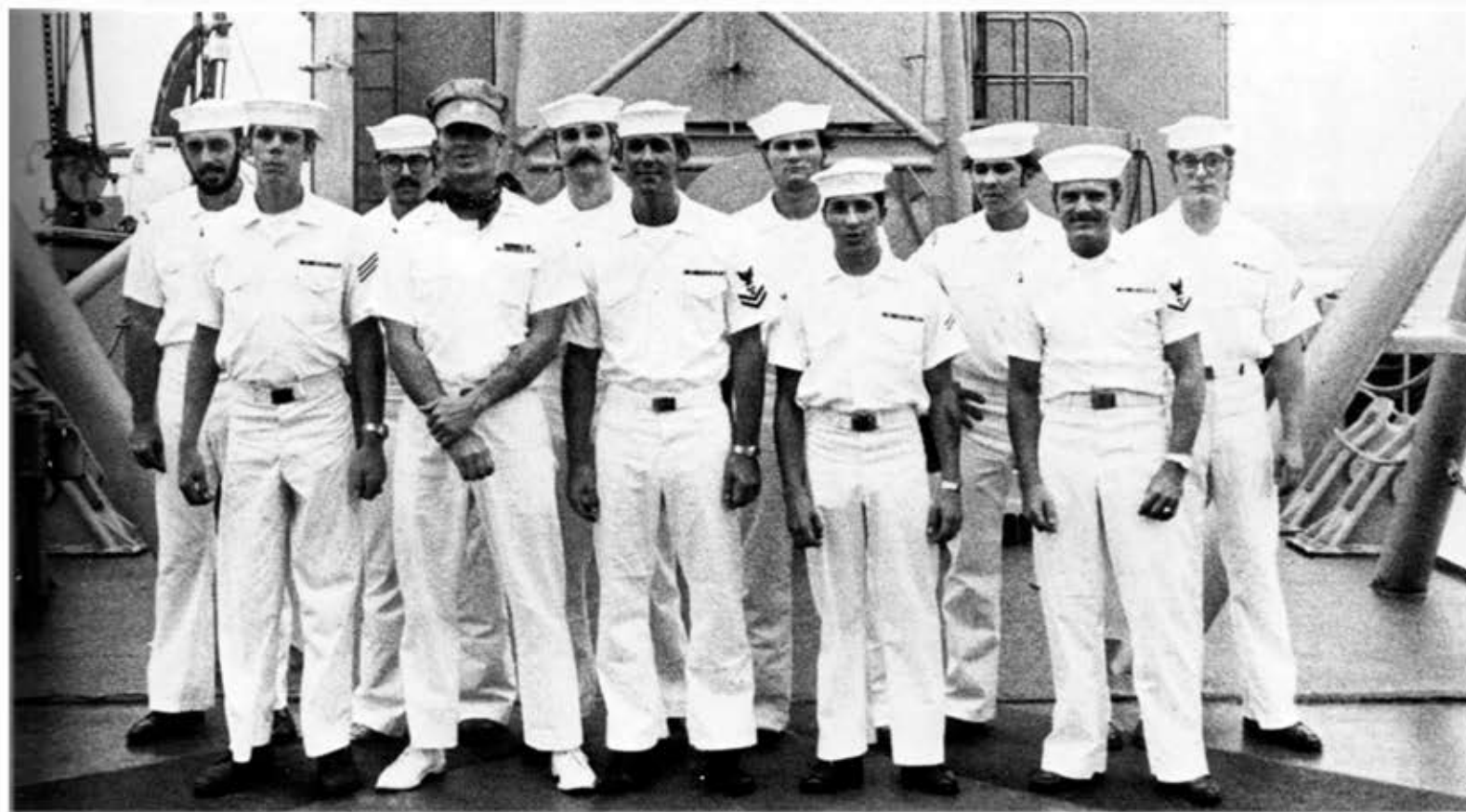


# M Division



First Row (left to right) - MMC C. FREE, MM1 R. FRIX, MM2 R. DILLARD, MM2 G. DOW, MMFN L. PETERSON, FA D. NICCUM, LTJG W. MIHALIC: Second Row - MM2 R. HOWELL, MM3 R. LUAT, MMFN D. OWENS, FN R. WEIMANN, FA L. PETREE, MM1 W. WOLFE



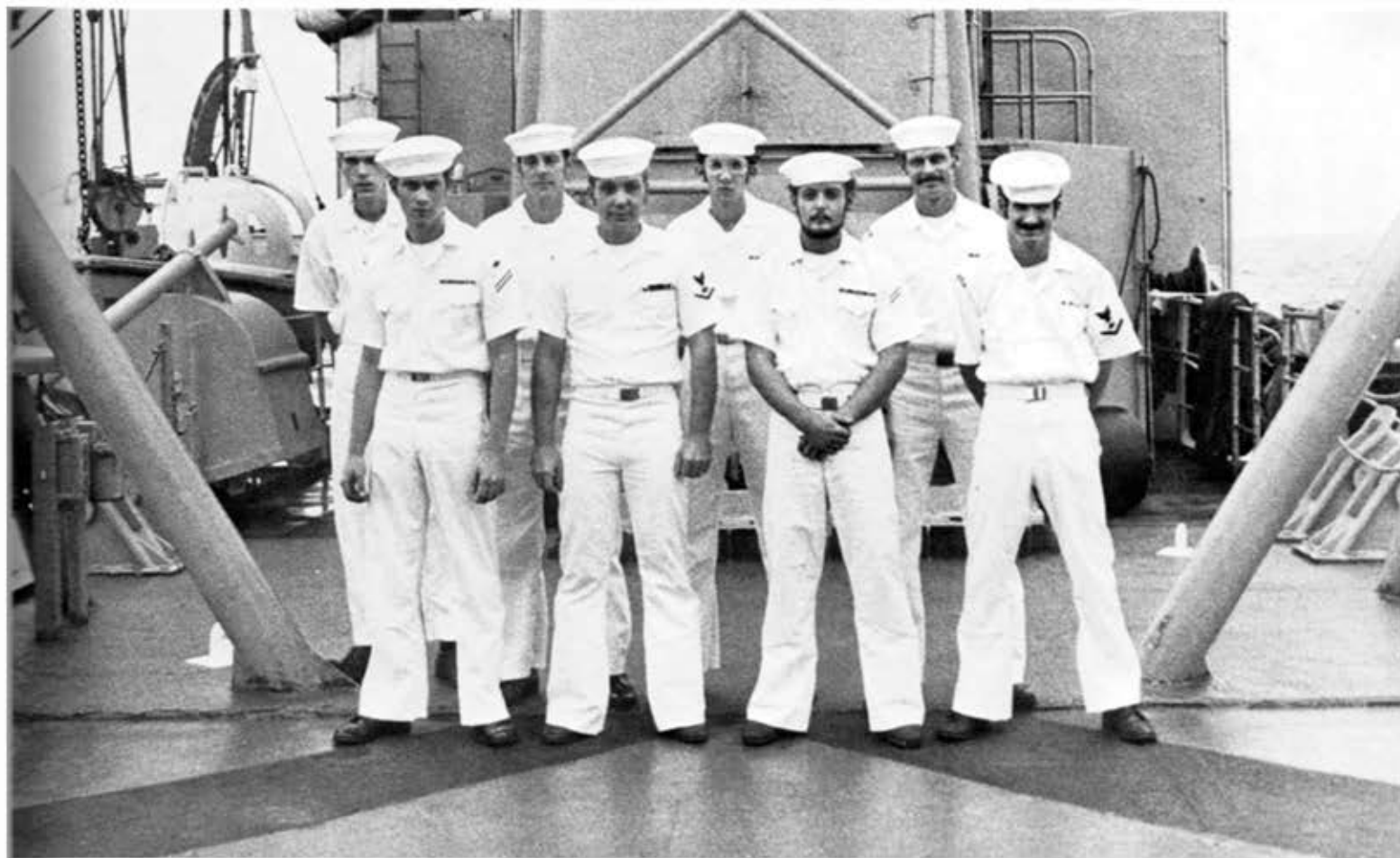


First Row (left to right) - FN B. HANZEN, MMC A. EDWARDS, MM2 S. BECQUART, FA T. WILLIAMS, MM3 D. RUSSILL: Second Row - MM1 J. FRADY, MM3 B. HENNESSY, MM3 J. HAYES, FN M. NINKOVICH, FA D. GARCIA, FA E. LEZON



First Row (left to right) - BT2 J. SHIMACK, FA J. KING, FA J. GALLOWAY, BT3 C. STRAUGHN, BT2 E. WALLACE, FA R. WILLEY, BT3 D. REISSMAN, FN P. FALLON, BTCS L. GORBY; Second Row - BT1 C. NEPPER, BTFN S. DVOJACKI, BT3 R. STUTZMAN, BTFN G. CROWELL, BTFN J. BROWN, FN G. WOODWARD, FA C. HODO





First Row (left to right) - FN J. JOHNSON, BT3 P. MEYER, BTFA G. GREGG, BT3 M. BOURASSA; Second Row - BT3 C. PEZOLD, BT2 F. LYONS, BT2 F. GILLEN, BT3 S. KING





Jan. 27 1972  
Underway wespac



"NOW STATION THE SPECIAL SEA & ANCHOR DETAIL . . ."

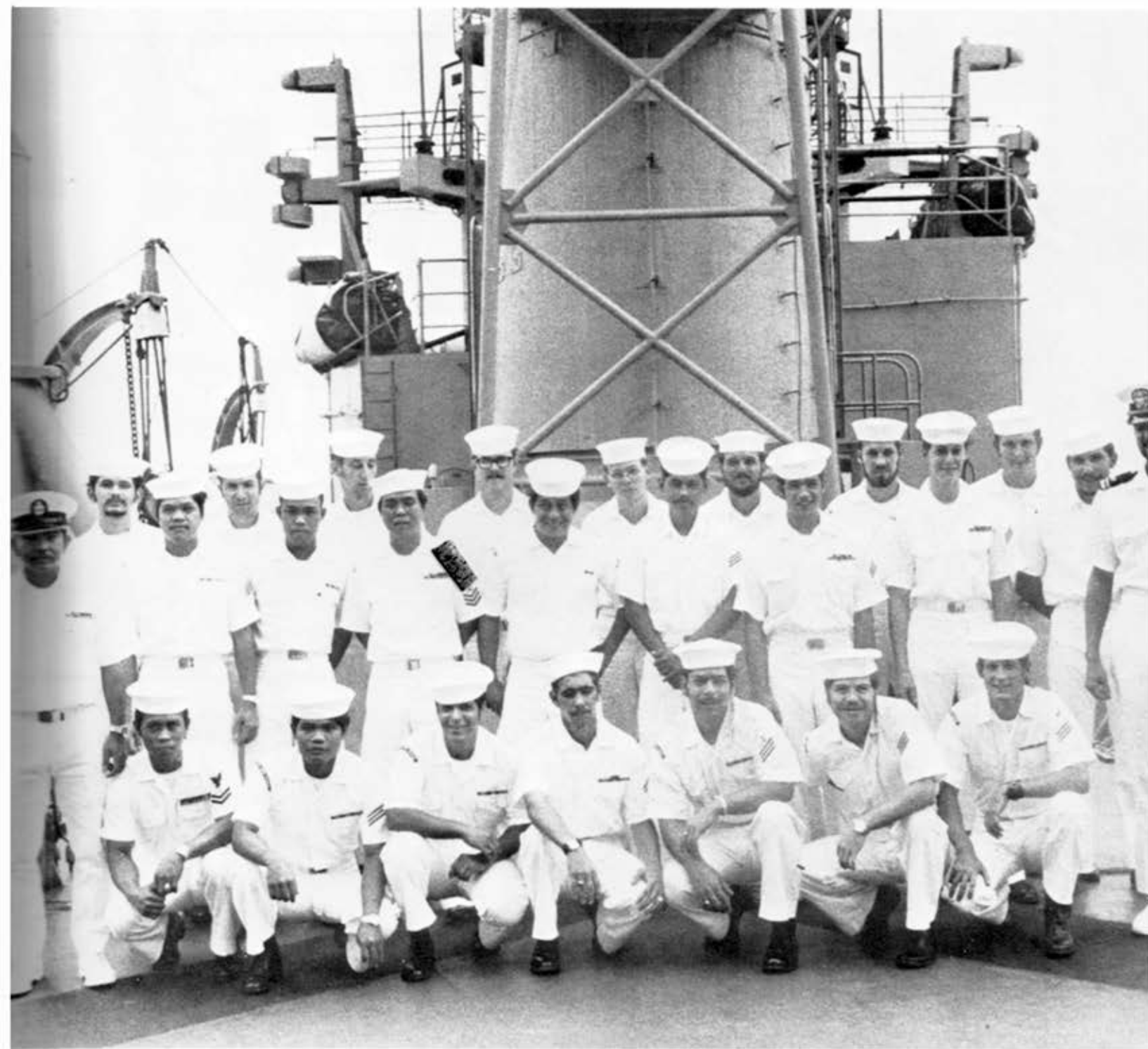


"TAKE IN LINE ONE . . ."

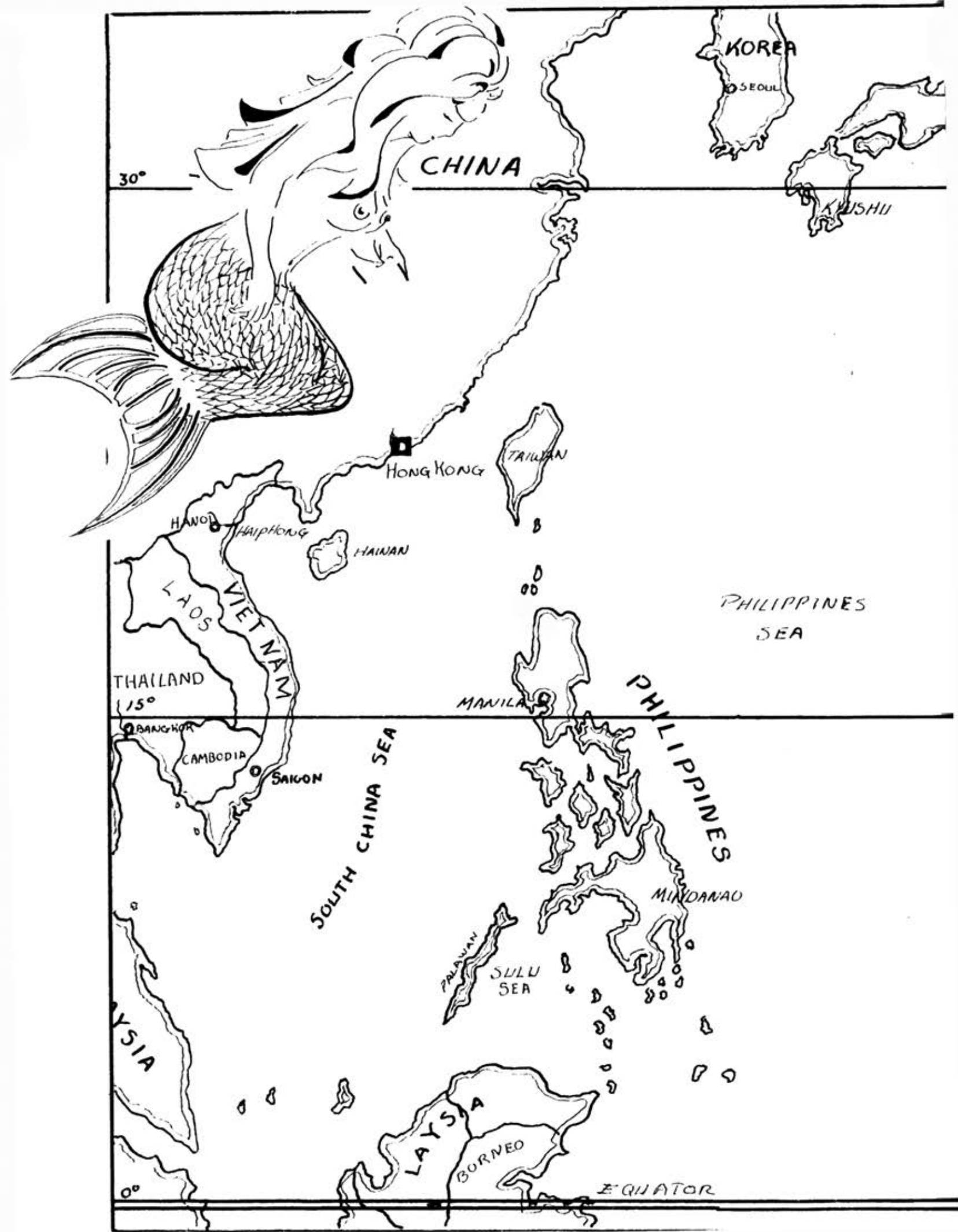


UNDERWAY AGAIN! BUT WHERE . . ."

# Supply Department



First Row (left to right) - SKC E. ASCANO, CS1 CARINO, TN J. GALLANO, SN L. PANTOJA, SHSA K. WILLIAMS, SN P. UGALDE, SN B. VODHANEL, DK3 M. LINDSTROM, LTJG S. ROBINSON; Second Row - TN R. OBIEN, TN E. AQUINO, SD1 C. CONCIO, TN M. ENCARNACION, SH3 J. MADRID, SH3 L. LOFARO, CS3 J. ALMEIDA, SK2 J. HINSON; Third Row - SH3 S. HOLGUIN, SH1 D. BOYANER, SH3 J. MCCORGARY, SK3 D. LEE, SK2 J. COUNTS, SK3 M. NEMCHICK, SN D. KIDDER, SN A. WITTMAN



Токуо  
ТОКОНАМА  
YOKOSUKA



30°

INTERNATIONAL DATE LINE

MIDWAY ISLANDS

HAWAIIAN ISLANDS  
HONOLULU  
OWAHU  
HAWAII

GUAM

15°

# PACIFIC OCEAN

EQUA







REFUEL: MIDWAY, GUAM  
-- THEN ON TO SUBIC BAY.



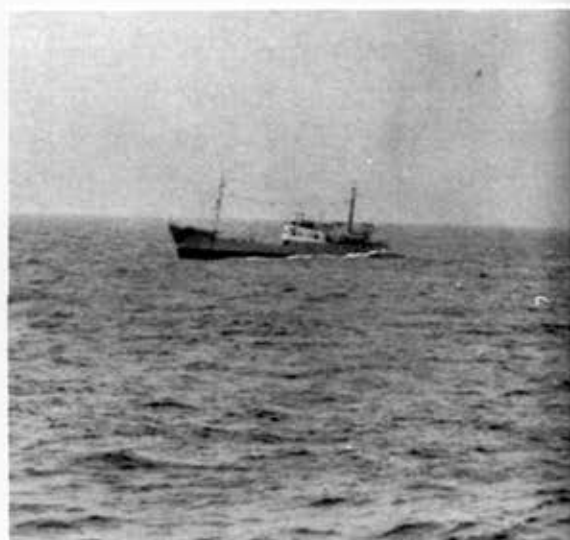
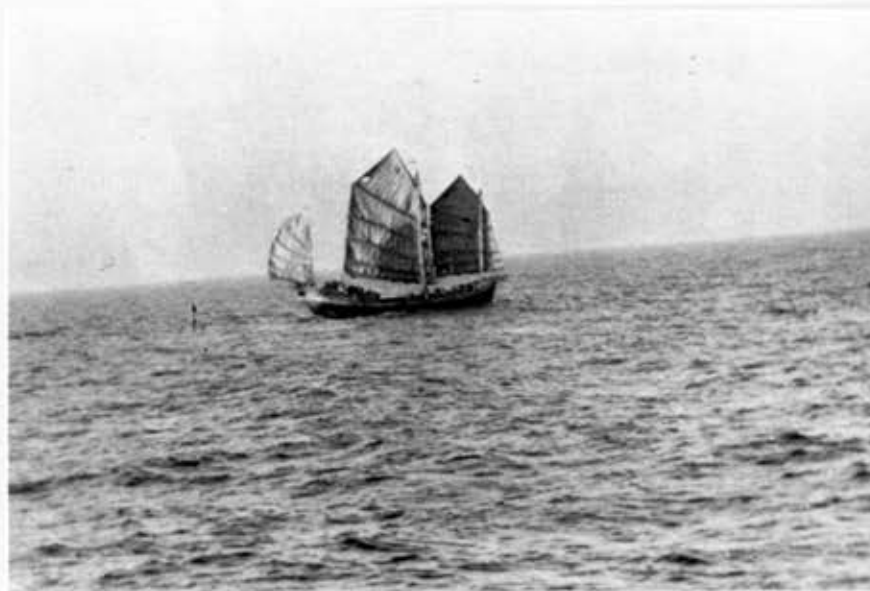
# Olongapo City P.I.

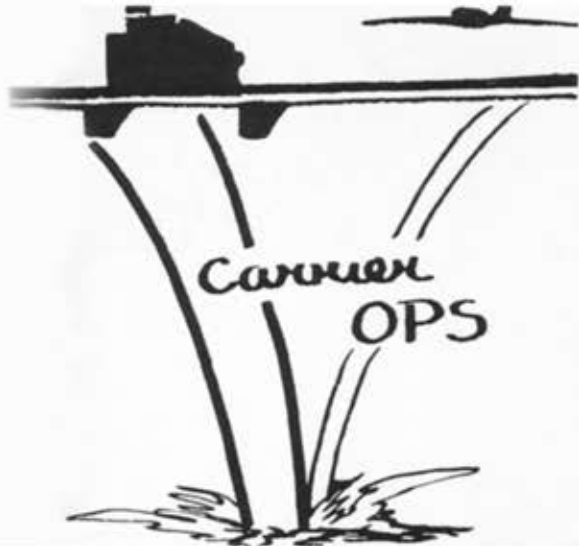
10 FEBRUARY - OLONGAPO CITY, P.I.



24 FEBRUARY - INITIAL GUNLINE FOLLOWED BY

SURVEILLANCE OPS IN SOUTH CHINA SEA





5 MARCH - USS HANCOCK (CVA19)





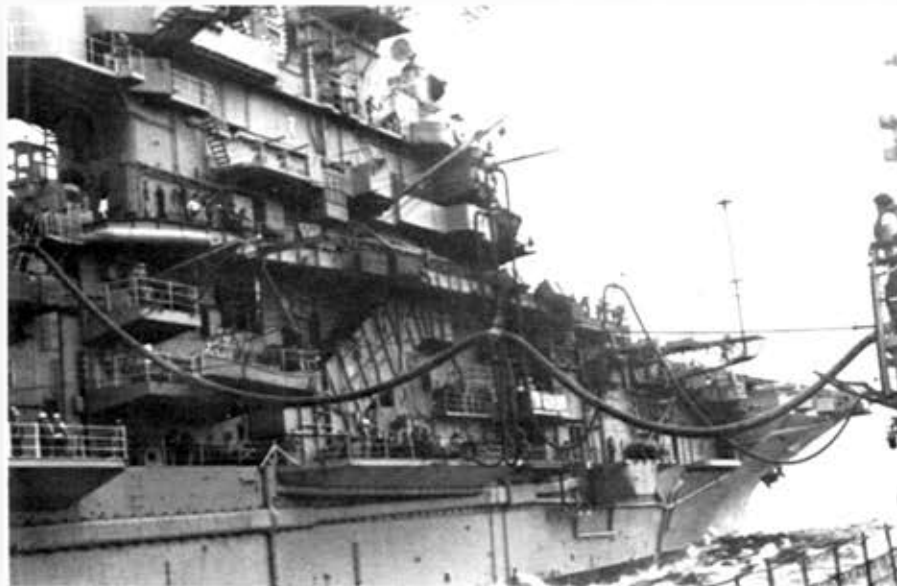


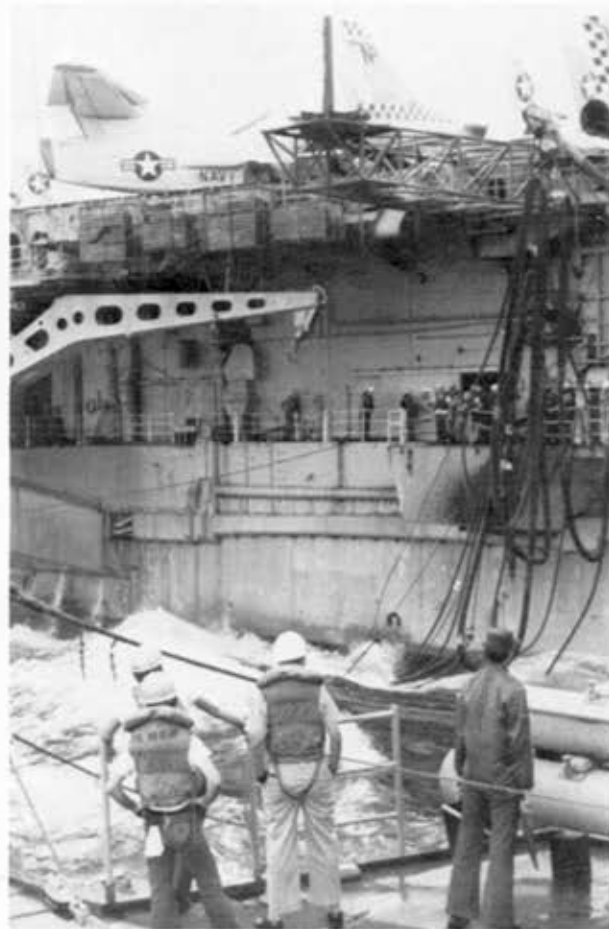
13 MARCH - SASEBO, JAPAN





3 APRIL - REJOINED USS HANCOCK (CVA19)



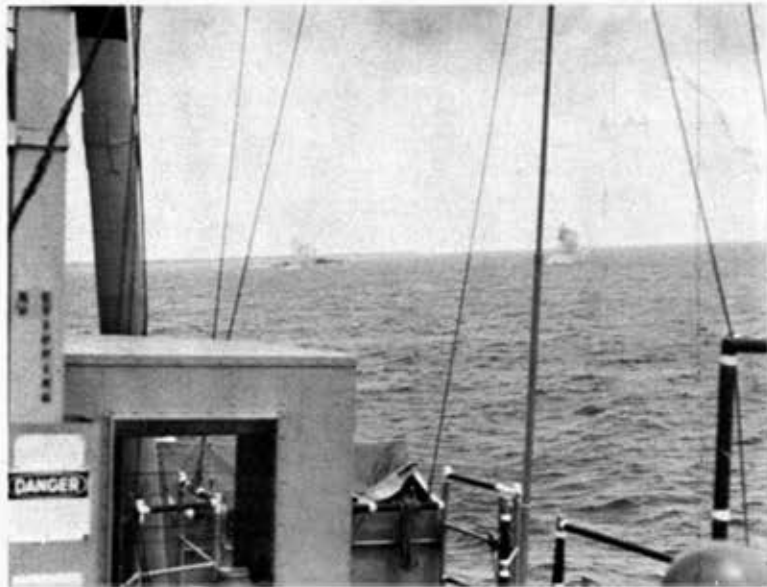
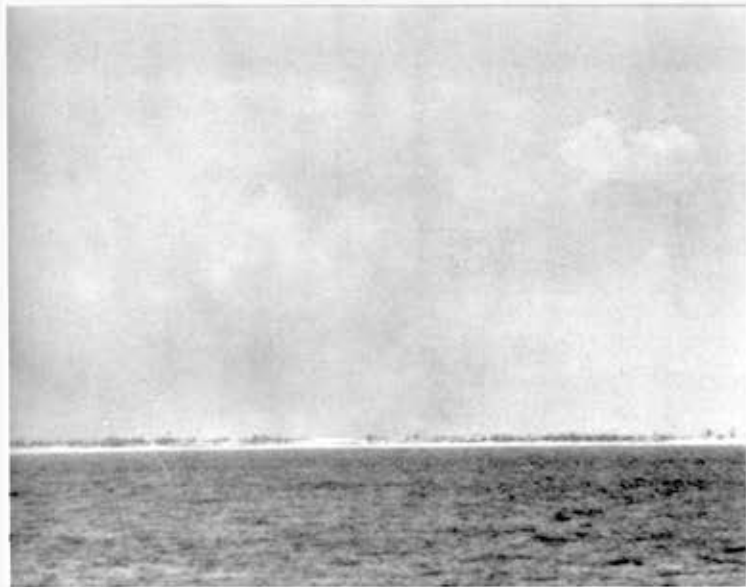




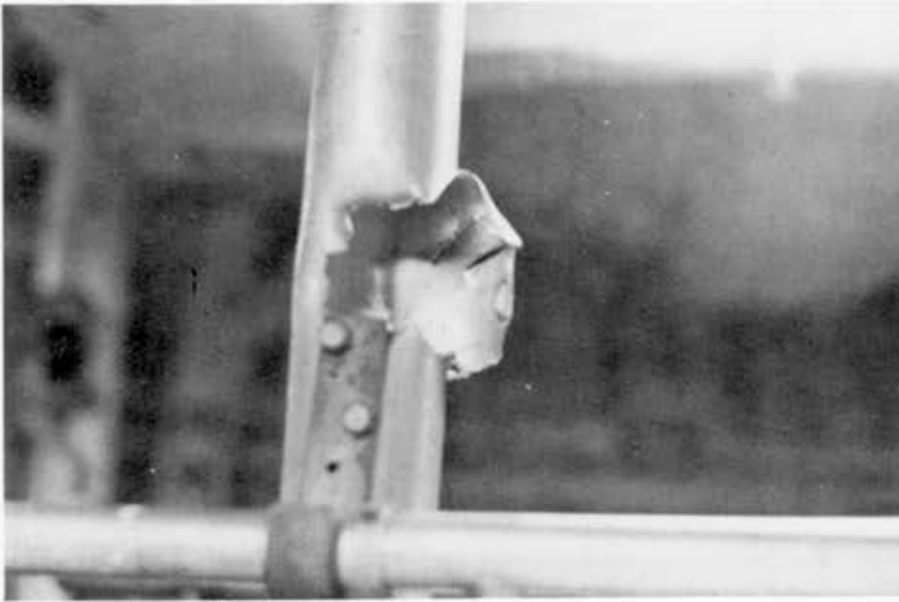
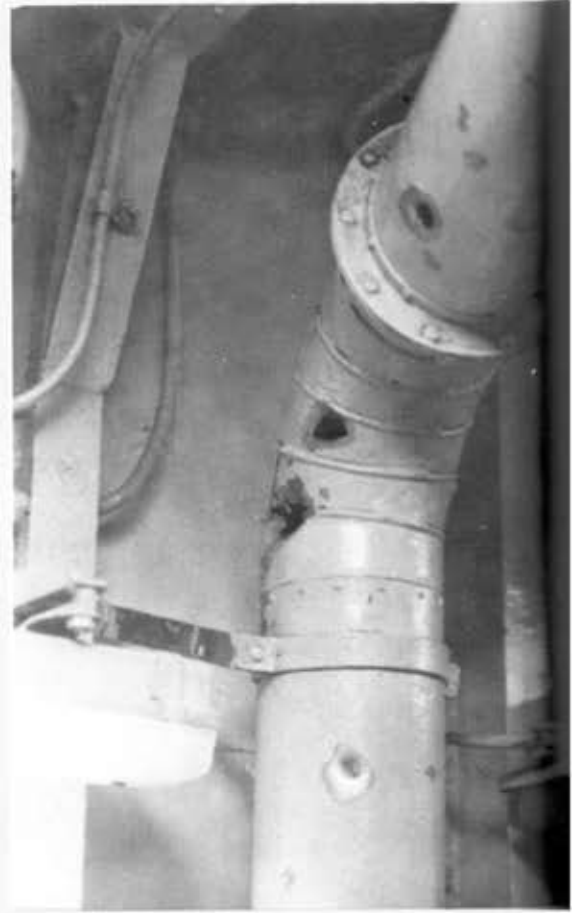


NOW THE SHIP IS EXPERIENCING  
COUNTER BATTERIES

6 APRIL - POINT ALLISON



# Aftermath









GUNLINE, GUNLINE . . .



# PACIFIC STARS AND STRIPES

AN AUTHORIZED UNOFFICIAL PUBLICATION  
FOR THE U.S. ARMED FORCES OF THE PACIFIC COMMAND

Vol. 28, No. 98

Saturday, April 8, 1972

Compiled From S&S Vietnam Bureau, AP and UPI

**SAIGON —** Scores of U.S. warplanes and several destroyers pounded targets inside North Vietnam for a second day Friday in the biggest air and naval offensive since the 1968 bombing halt.

Waves of other bombers and destroyers raked North Vietnamese positions in the northern sector of South Vietnam, and the U.S. 7th Fleet announced that one of its ships had been hit.

Spokesmen said the destroyer Lloyd Thomas was hit by Communist artillery and automatic weapons fire while it was shelling North Vietnamese targets just below the DMZ. Three Americans were wounded and the ship sustained light damage, the Navy said. It remained on the firing line.

The U.S. had unleashed its air power over North



17 APRIL - "LT" RESCUES 5 VIETNAMESE FISHERMEN 6 MILES OFFSHORE FROM QUANG TRI PROVINCE.

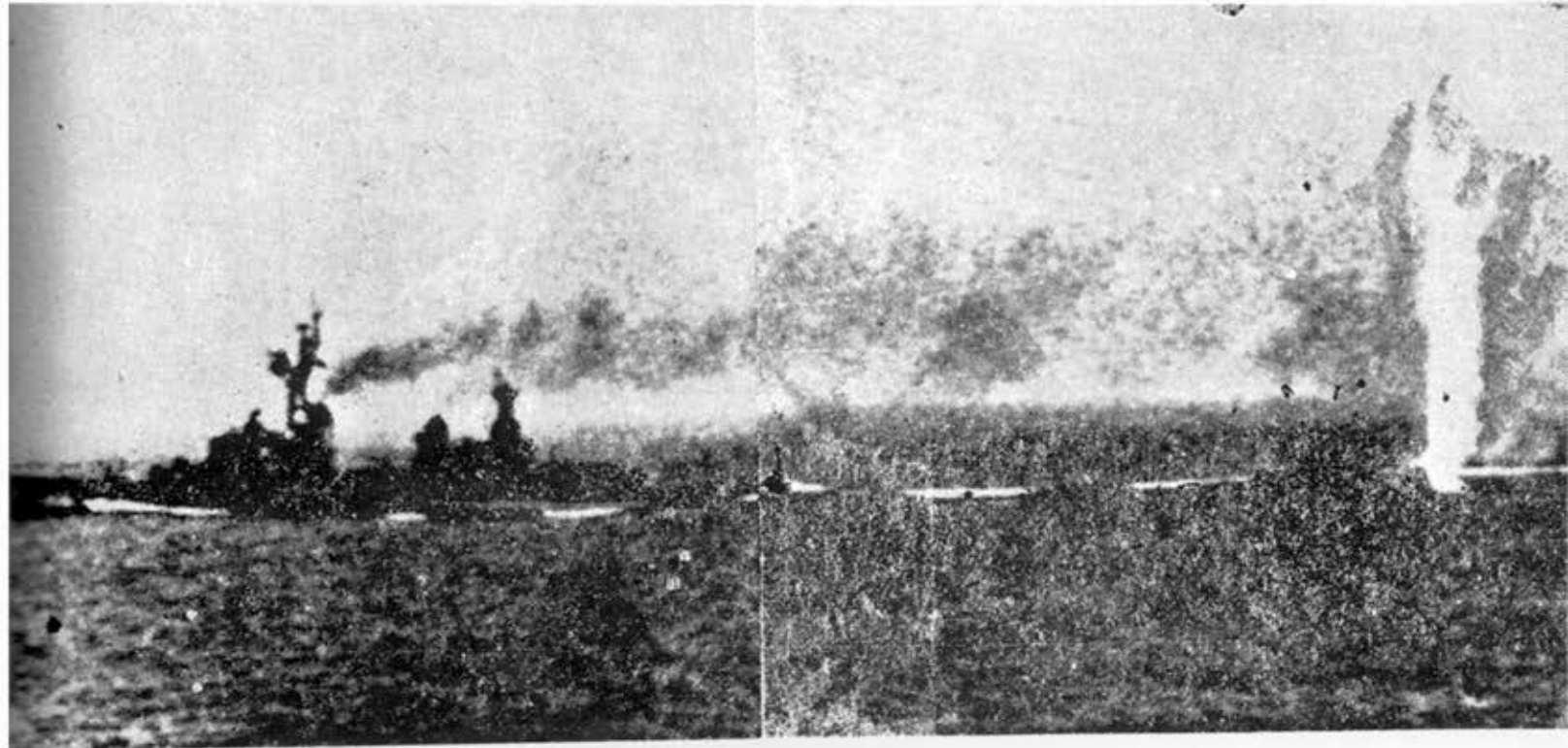


# The Sunday Times

01. 48-65-31

MANILA, PHILIPPINES, MAY 14, 1972

★



THE DESTROYER USS Lloyd Thomas manages to avoid an enemy shell fired from the island of Hon Ne, off the coast of North Vietnam. The Thomas, with three other ships, was engaged in a naval strike against coast artillery when attacked. (AP)

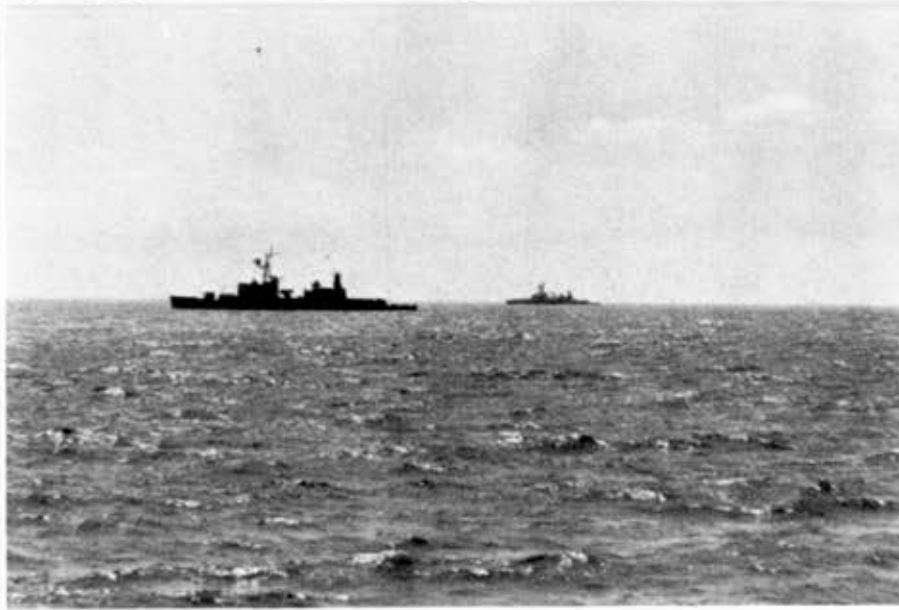


"ALL ABOARD FOR  
THE FREEDOM TRAIN!"

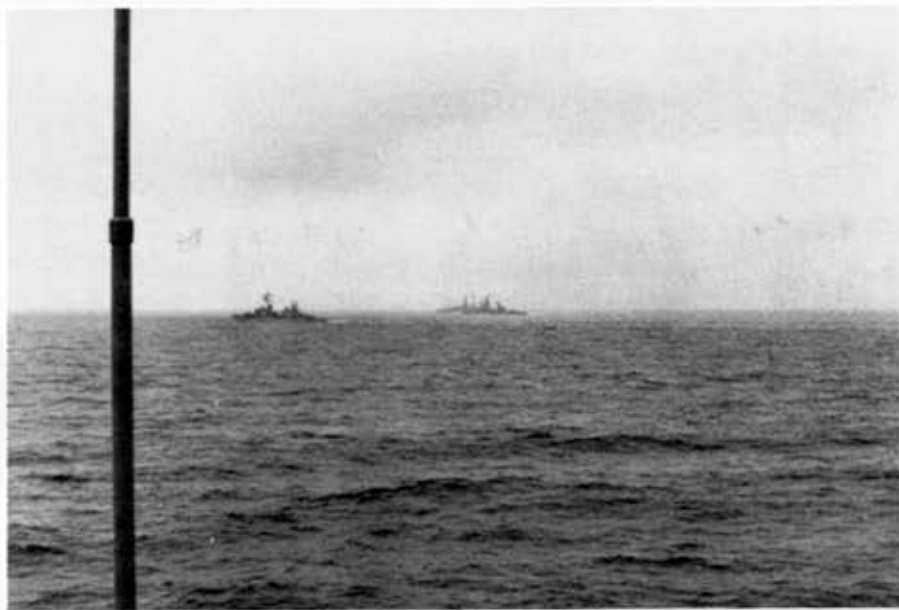


Honolulu Star-Bulletin

# MIGs Strike at

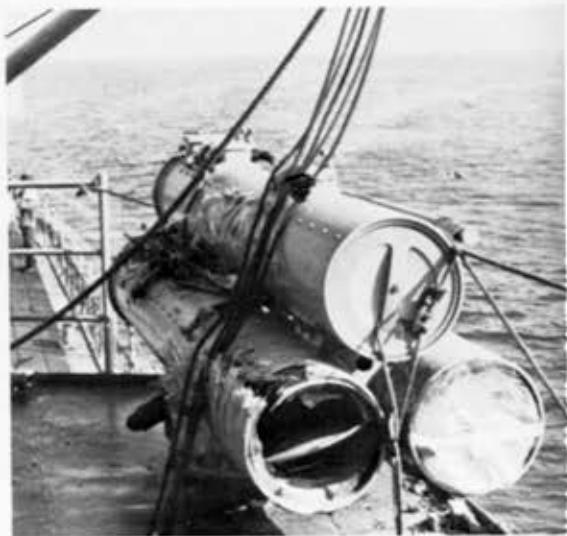


# U.S. Ships





27 APRIL - DANANG - TENDER AVAILABILITY



OOPS!

BACK TO THE GUNLINE



SUBIC FOR UPKEEP AND . . .

# Ship's Party



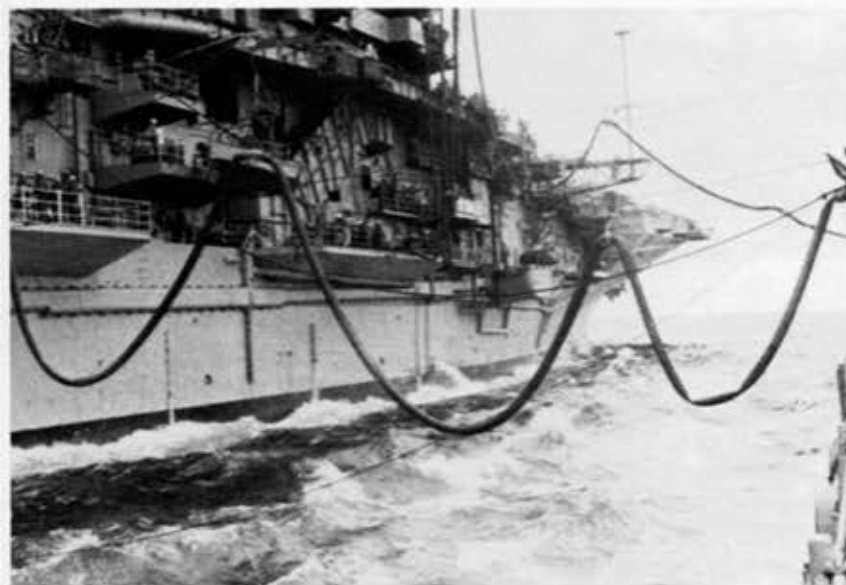








24 MAY - YANKEE STATION WITH  
USS CORAL SEA (CVA43)



29 MAY - MILITARY REGION I





4 JUNE - REJOIN USS CORAL SEA (CVA43)



12 JUNE - RETURN TO MILITARY REGION I



29 JUNE - MOORED SUBIC BAY  
2 JULY - DEPART SUBIC BAY WITH  
USS MACKENZIE & USS CRAIG  
FOR PEARL HARBOR





"MOORED STARBOARD SIDE TO B-26,  
PEARL HARBOR, HAWAII."

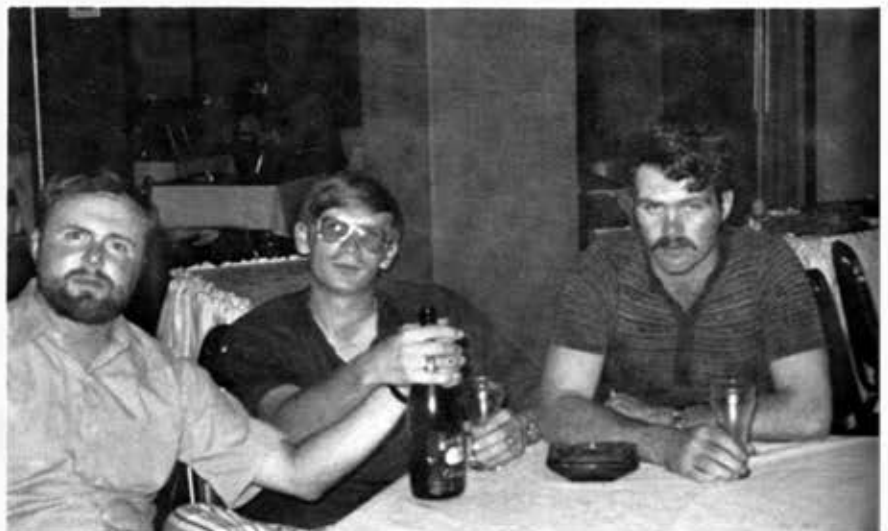


HOMECOMING 13 JULY 1972





*It's more than a Ship  
it's people...*





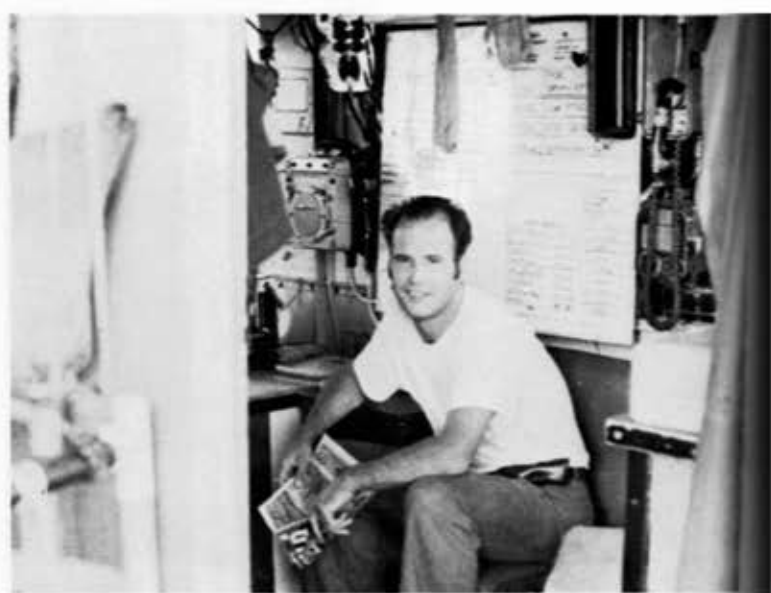


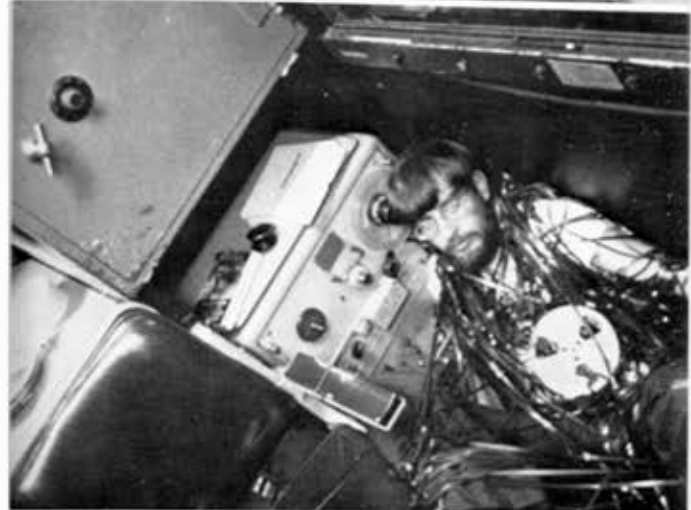














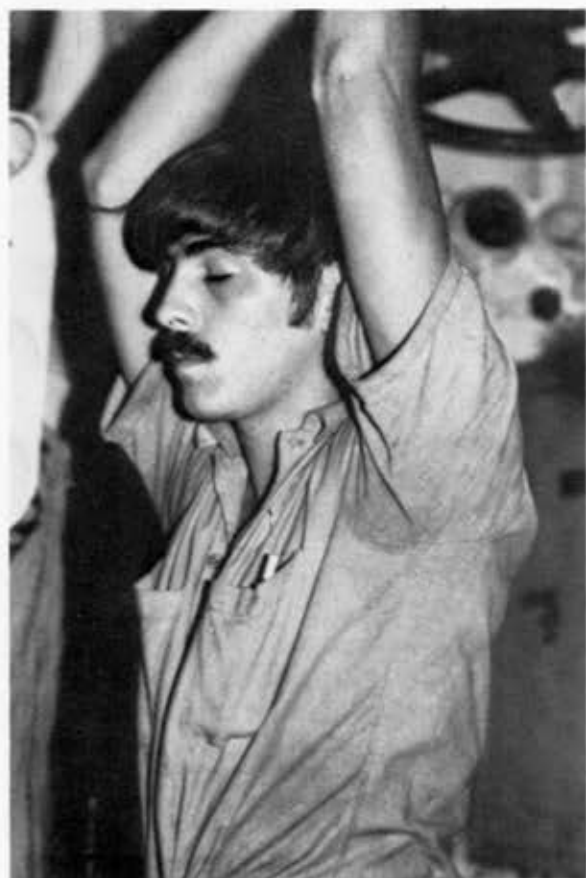


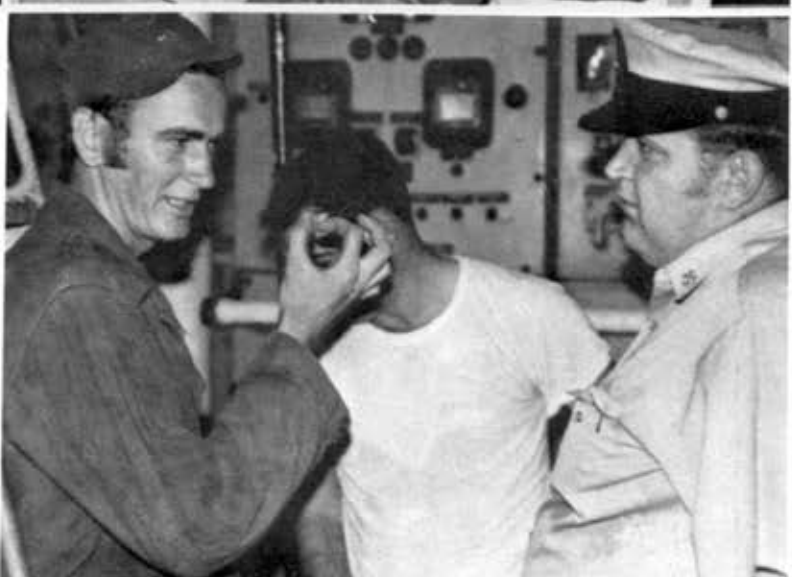






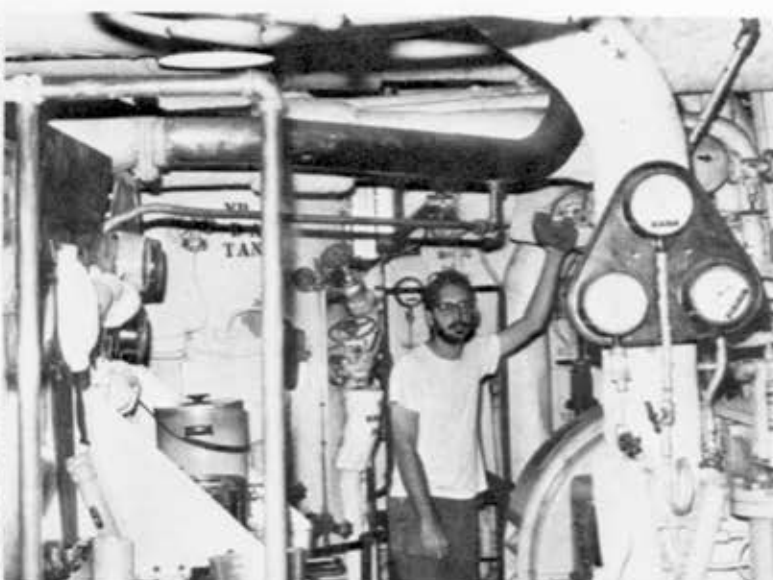


























1ST PRIZE: DON MINER



RUNNER-UP: PERRY GLUCKMAN



# PHOTO



1st PLACE: PERRY GLUCKMAN



SECOND PLACE: MILES FISH



THIRD PLACE: DON MINER



A destroyer is a lovely ship,  
probably the nicest fighting ship of  
all.

Battleships are a little like steel  
cities or great factories of destruc-  
tion. Aircraft carriers are floating  
flying fields. Even cruisers are big  
pieces of machinery, but a destroyer  
is all boat.

In the beautiful clean lines of  
her, in her speed and roughness, in  
curious gallantry, she is completely  
a ship, in the old sense.

John Steinbeck



# OLD IRONSIDES

*Ay, tear her tattered ensign down!  
Long has it waved on high,  
And many an eye has danced to see  
That banner in the sky;  
Beneath it rung the battle shout,  
And burst the cannon's roar;—  
The meteor of the ocean air  
Shall sweep the clouds no more!*

*Her deck, once red with heroes' blood,  
Where knelt the vanquished foe,  
When winds were hurrying o'er the flood,  
And waves were white below,  
No more shall feel the victor's tread,  
Or know the conquered knee;—  
The harpies of the shore shall pluck  
The eagle of the sea!*

*Oh, better that her shattered hulk  
Should sink beneath the wave;  
Her thunders shook the mighty deep,  
And there should be her grave;  
Nail to the mast her holy flag,  
Set every threadbare sail,  
And give her to the god of storms,  
The lightning and the gale!*

*Oliver Wendell Holmes, 1830*



# CRUISEBOOK STAFF

MANAGING EDITOR . . . . .	.JOE HOCHSTETTLER
LAYOUT EDITOR . . . . .	.DALE LAMPL
WRITER . . . . .	BILL BAILEY
ADVISOR. . . . .	DENNIS MURPHY
PHOTOGRAPHY . . . . .	DON MINER PERRY GLUCKMAN FRED MILKE
SHIP'S PHOTOGRAPHER . . . . .	.DALE LAMPL
ARTISTS . . . . .	."DUCK" COLFORD GORDON DREWS







